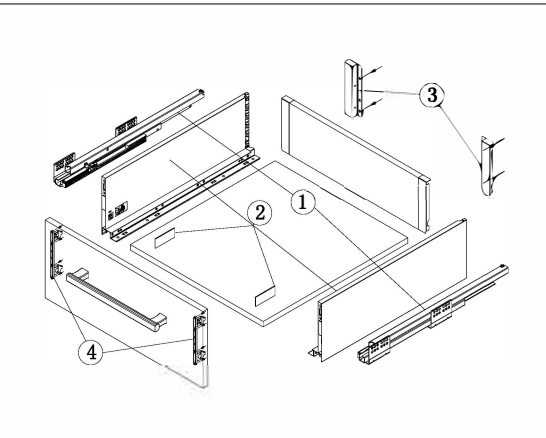
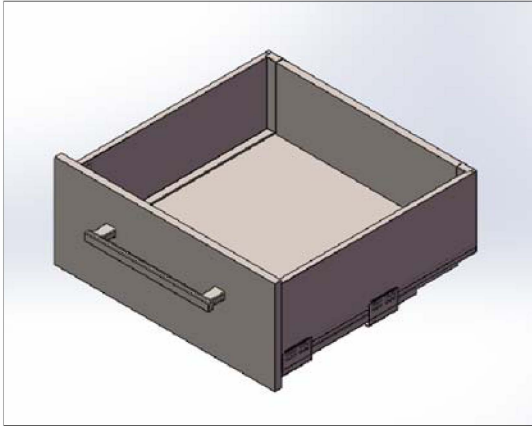


Ultra Slim-Q H171mm

Modul Box Assembly Instruction

Special Features:

- Length:270,300,350,400,450,500,550mm.
- The drawer side-board is 171mm high.
- Drawer width can be designed freely with automatic error adjustment.
- Hidden full pullout silencing sliding skid can bear 30kg and enjoys
- excellent stability and quite and smooth sliding performance.
- Quick installation and dismantle.
- Newly-designed built-in damper is free from reinstallation and ensures soft and smooth drawer movements.



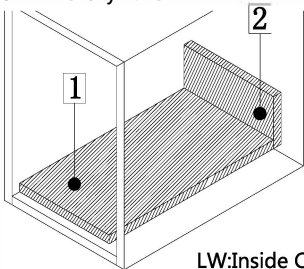
| Basic length | Internally usable drawer depth | Minimum installation depth of drawer | Minimum installation height |
|--------------|--------------------------------|--------------------------------------|-----------------------------|
| 270mm | 242mm | 270mm | 194mm |
| 300mm | 272mm | 300mm | 194mm |
| 350mm | 322mm | 350mm | 194mm |
| 400mm | 372mm | 400mm | 194mm |
| 450mm | 422mm | 450mm | 194mm |
| 500mm | 472mm | 500mm | 194mm |
| 550mm | 522mm | 550mm | 194mm |

1. Guide Left/Right Length : 270mm
300mm
350mm
400mm
450mm
500mm
550mm

2. Drawer Side & Decorative Cap Left/Right Length: 270mm
300mm
350mm
400mm
450mm
500mm
550mm

3. Back connector Left / Right
4. Front connector Left / Right

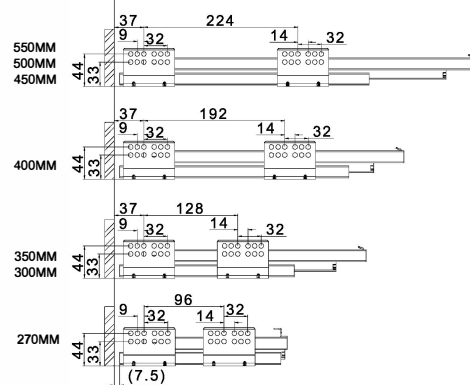
Technology pivot: Bottom and Back Panel Measurement 16MM Density Panel



LW:Inside Cabinet Width

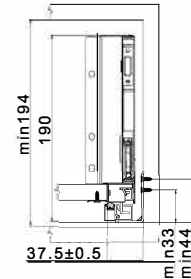
- 1 Bottom panel width=Inside Cabinet Width-75±0.5
Bottom panel length=Runner length-24MM
- 2 Back panel height= 167MM
Back panel width=Inside Cabinet Width-87±0.5

Runner Installation(mm)

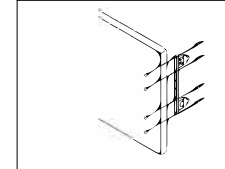


Basic length:270/300/350/400/450/500/550

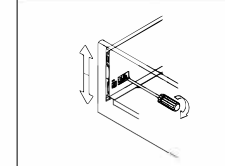
Inside Cabinet Dimension



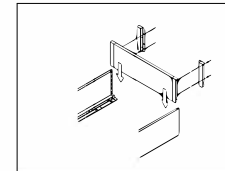
Front fixing brackets mounting



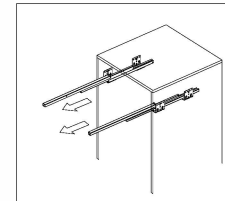
Front panel height adjustment : ±2mm



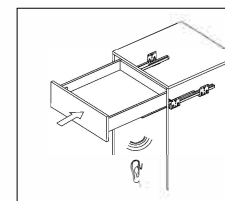
Mounting the drawer



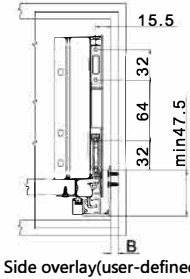
Installing the drawer



Function of the damper

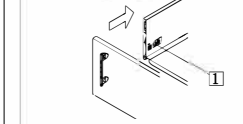


Front Panel Mounting Positions

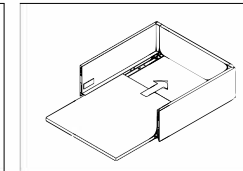
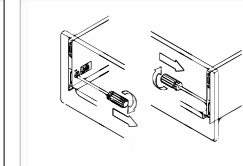


B Side overlay(user-defined)

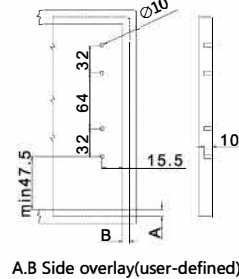
1 Tighten the fixing screw after installed the panel



Front panel side adjustment : right1mm



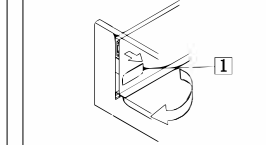
Front Fixing Brackets Positions



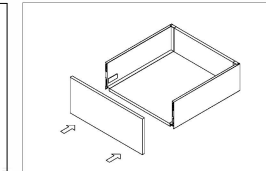
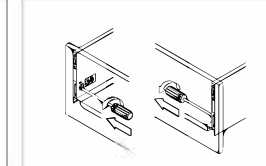
A.B Side overlay(user-defined)

Front panel removing

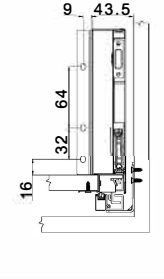
1 Take out the plastic cover



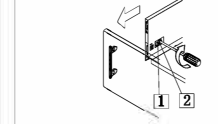
Front panel side adjustment : left1mm



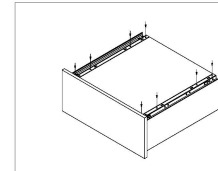
Back Panel Mounting Positions



1 Loosen the fastening screws
2 Rotation to dismantle the panel



Removing the drawer



Push the metal spring part from the panel & pull out

