

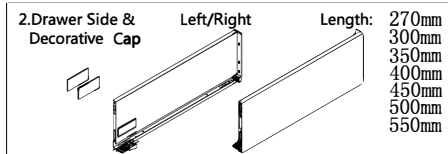
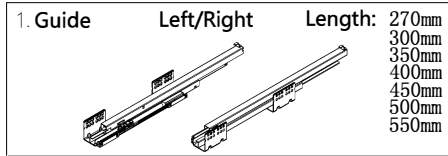
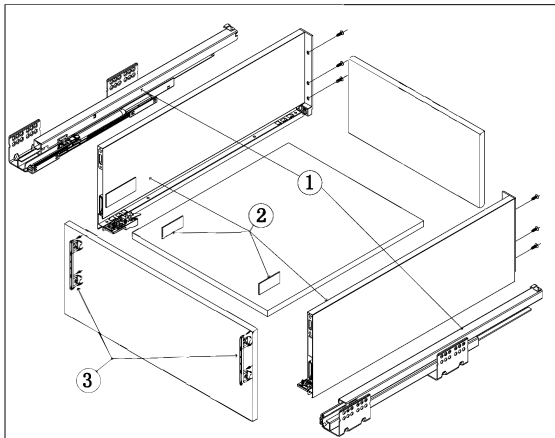
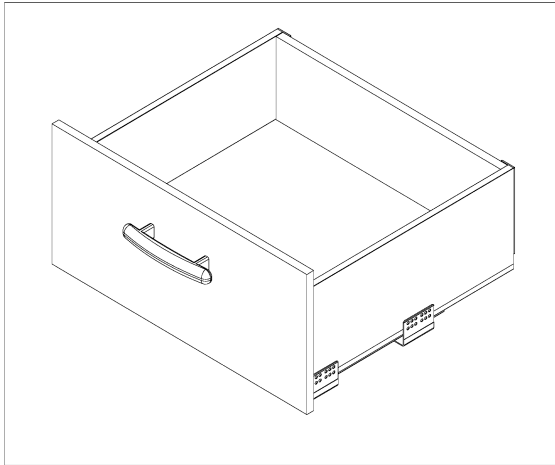
SimBox H175mm

Modul Box Assembly Instruction

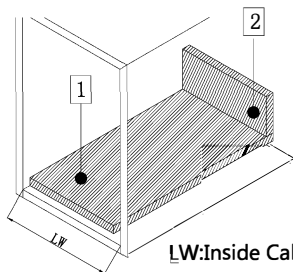
Special Features:

- Length: 270, 300, 350, 400, 450, 500, 550mm.
- The drawer side-board is 175mm high.
- Drawer width can be designed freely with automatic error adjustment.
- Hidden full pullout silencing sliding skid can bear 30kg and enjoys
- excellent stability and quite and smooth sliding performance.
- Quick installation and dismantle.
- Newly-designed built-in damper is free from reinstallation and ensures soft and smooth drawer movements.

Basic length	Internally usable drawer depth	Minimum installation depth of drawer	Minimum installation height
270mm	244mm	270mm	208mm
300mm	274mm	300mm	208mm
350mm	324mm	350mm	208mm
400mm	374mm	400mm	208mm
450mm	424mm	450mm	208mm
500mm	474mm	500mm	208mm
550mm	524mm	550mm	208mm



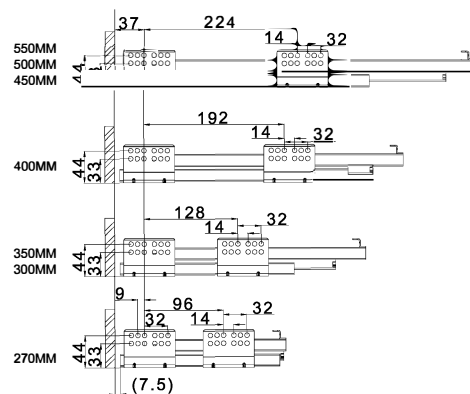
Technology pivot: Bottom and Back Panel Measurement 16MM Density Panel



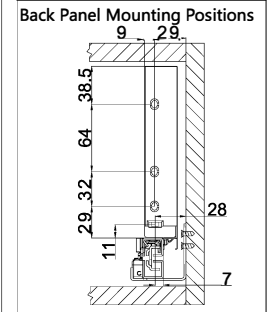
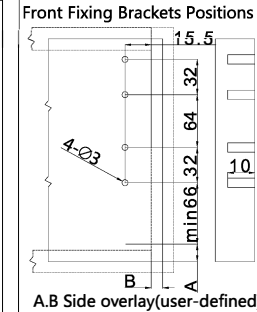
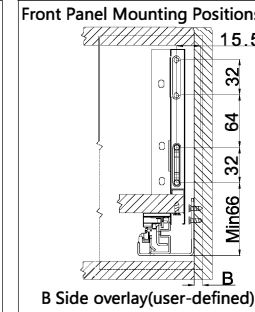
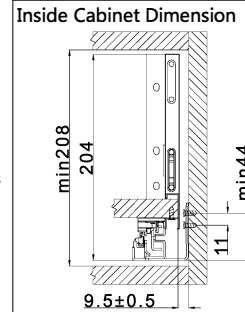
LW: Inside Cabinet Width

- 1 Bottom panel width=Inside Cabinet Width-19±0.5
Bottom panel length=Runner length-20MM
- 2 Back panel height= 148MM
Back panel width=Inside Cabinet Width-42±0.5

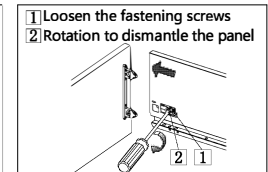
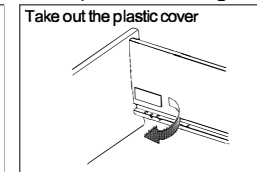
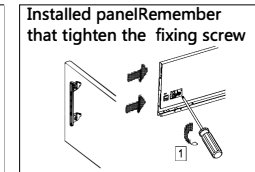
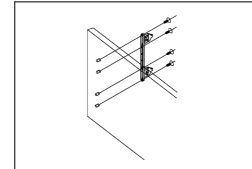
Runner Installation(mm)



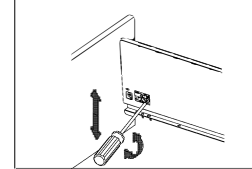
Basic length: 270/300/350/400/450/500/550



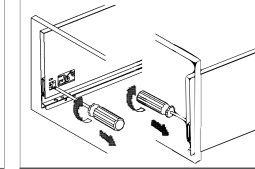
Front fixing brackets mounting



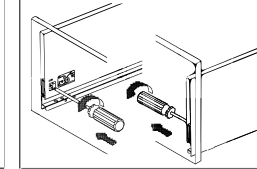
Front panel height adjustment : ±2mm



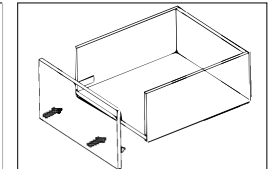
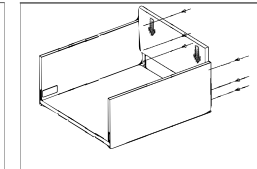
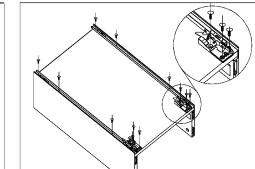
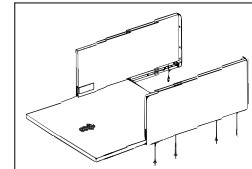
Front panel side adjustment : right 1mm



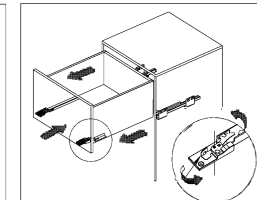
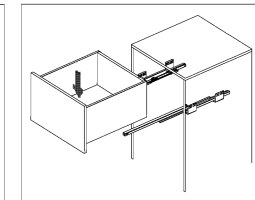
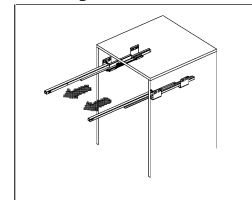
Front panel side adjustment : left 1mm



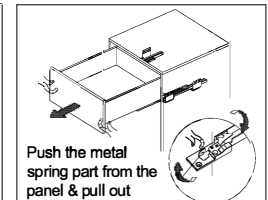
Mounting the drawer



Installing the drawer



Removing the drawer



Function of the damper

