

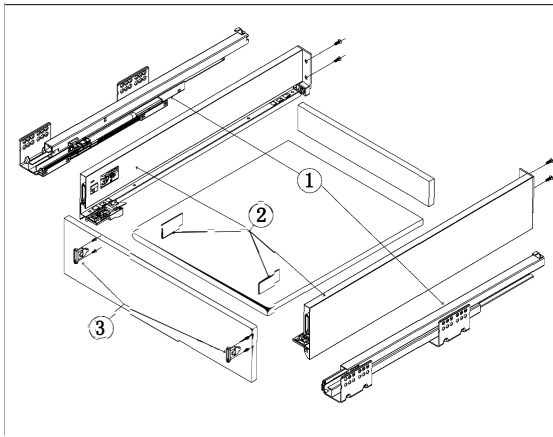
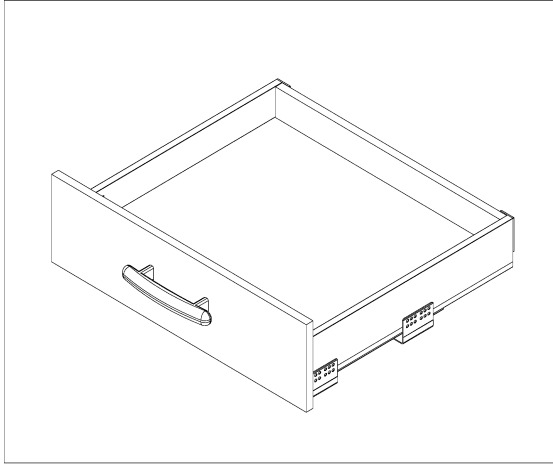
SimBox H90mm

Modul Box Assembly Instruction

Special Features:

- Length: 270, 300, 350, 400, 450, 500, 550mm.
- The drawer side-board is 90mm high.
- Drawer width can be designed freely with automatic error adjustment.
- Hidden full pullout silencing sliding skid can bear 30kg and enjoys
- excellent stability and quite and smooth sliding performance.
- Quick installation and dismantle.
- Newly-designed built-in damper is free from reinstallation and ensures soft and smooth drawer movements.

Basic length	Internally usable drawer depth	Minimum installation depth of drawer	Minimum installation height
270mm	244mm	270mm	123mm
300mm	274mm	300mm	123mm
350mm	324mm	350mm	123mm
400mm	374mm	400mm	123mm
450mm	424mm	450mm	123mm
500mm	474mm	500mm	123mm
550mm	524mm	550mm	123mm

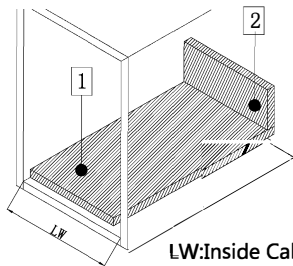


1. Guide Left/Right Length: 270mm, 300mm, 350mm, 400mm, 450mm, 500mm, 550mm

2. Drawer Side & Decorative Cap Left/Right Length: 270mm, 300mm, 350mm, 400mm, 450mm, 500mm, 550mm

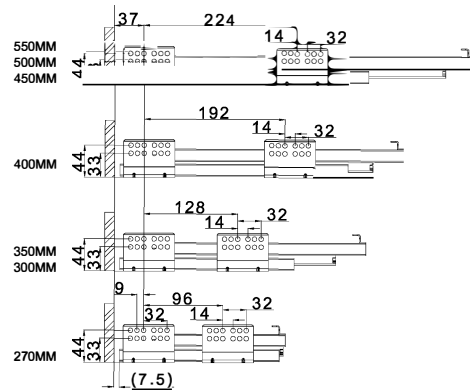
3. Front connector Left / Right

Technology pivot: Bottom and Back Panel Measurement 16MM Density Panel



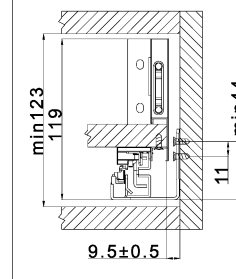
- 1** Bottom panel width=Inside Cabinet Width-19±0.5
Bottom panel length=Runner length-20MM
- 2** Back panel height= 63MM
Back panel width=Inside Cabinet Width-42±0.5

Runner Installation(mm)

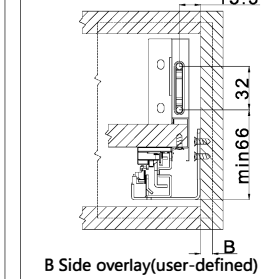


Basic length: 270/300/350/400/450/500/550

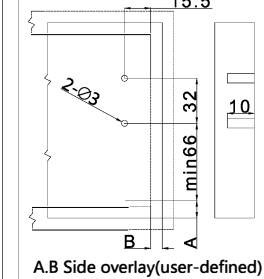
Inside Cabinet Dimension



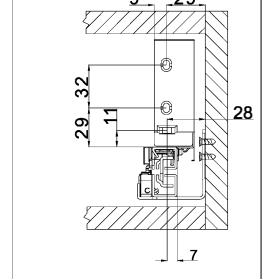
Front Panel Mounting Positions



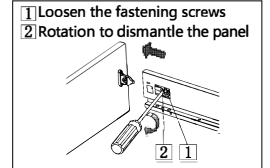
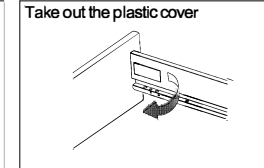
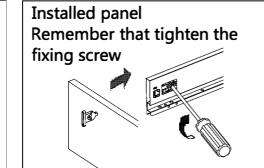
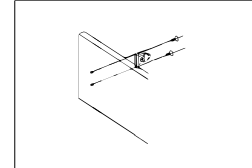
Front Fixing Brackets Positions



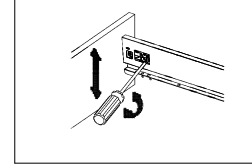
Back Panel Mounting Positions



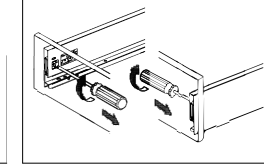
Front fixing brackets mounting



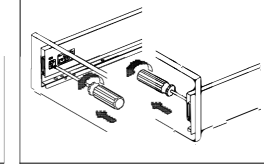
Front panel height adjustment : ±2mm



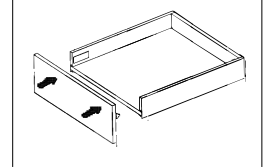
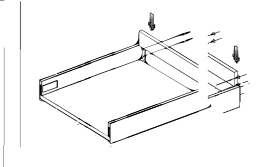
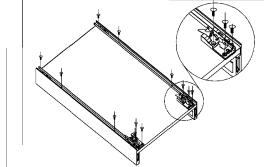
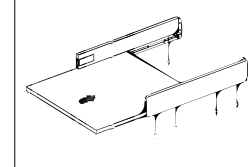
Front panel side adjustment : right 1mm



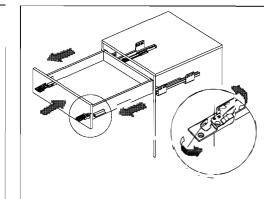
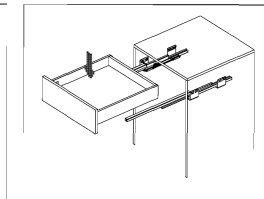
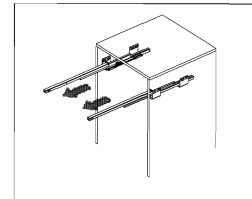
Front panel side adjustment : left 1mm



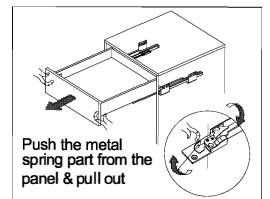
Mounting the drawer



Installing the drawer



Removing the drawer



Function of the damper

