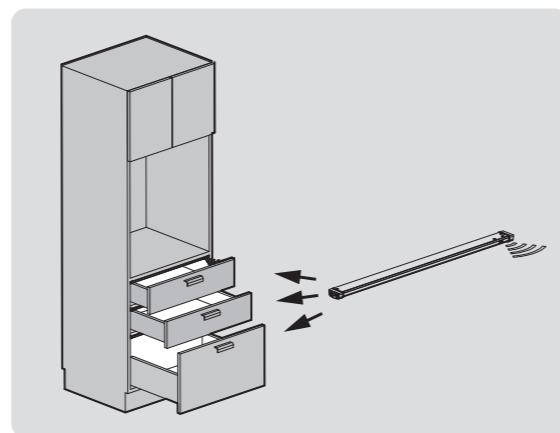
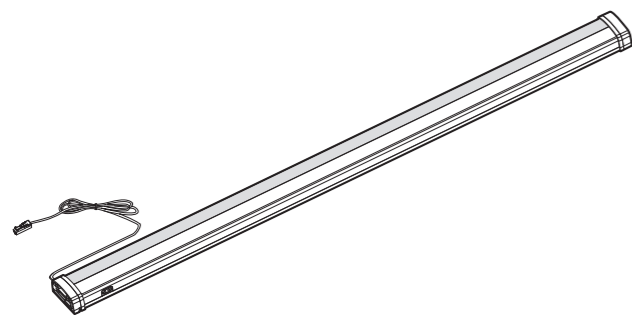
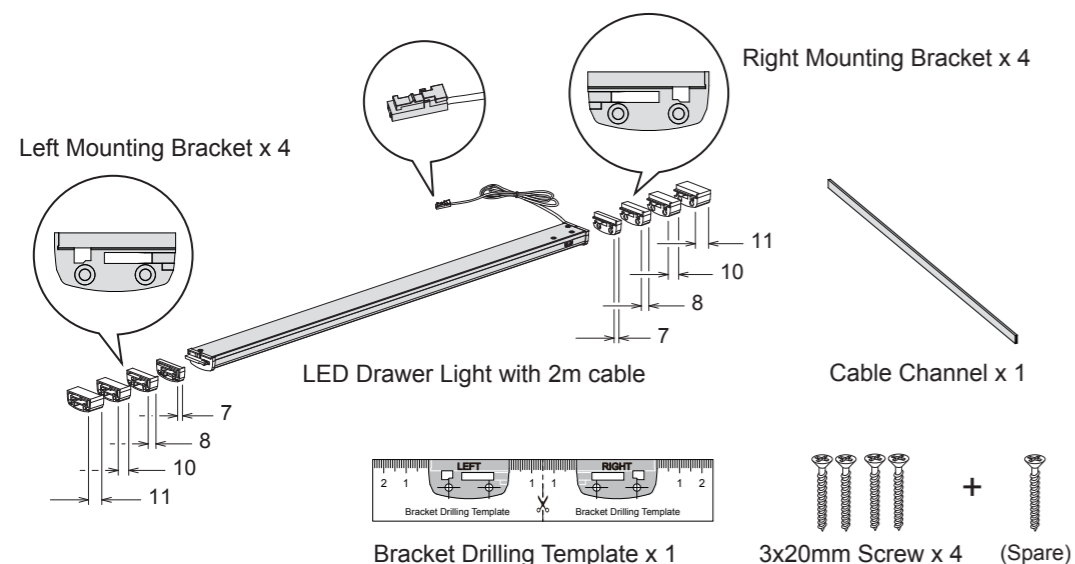


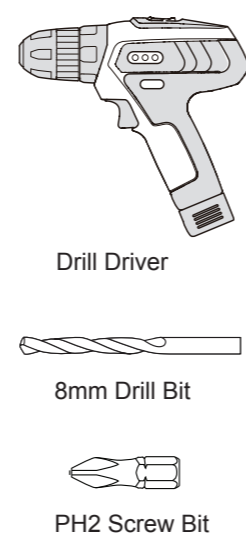
Operating and Installation Instructions



Package contents



Tools required



Product Information

Voltage	Wattage (W)	Liminous efficiency (Lm/W)	Drawer Light Length including brackets (mm) (varies from bracket thickness)	Cabinet Length (mm) including two side board	Cabinet opening width (mm) (varies from board thickness)
24V	3.9	80	461~469	500	461~470
24V	5.1	80	561~569	600	561~570
24V	7.3	80	761~769	800	761~770
24V	8.4	80	861~869	900	861~870
24V	9.5	80	961~969	1000	961~970

Important safety information

Please read the instructions carefully before installing this product and keep it in a safe place for further reference.

1. Do not wire the individual LED light fittings directly to the mains. A LED driver must be used. This product is for home and office use only. Keep out of moisture and use only in dry rooms.
2. This product requires a 24V LED driver which is only suitable for connecting to a 110~240V 50/60Hz supply.
3. Make sure that the LED driver used with this fittings has an adequate max wattage.
4. Before installation or maintenance, isolate the light fittings from the mains.
5. This product must not be modified. If in doubt, installation must be carried out by a qualified electrician.
6. Do not attempt with high-voltage lighting. Only low-voltage cable can be routed between and through cabinets.

Maintenance & Care

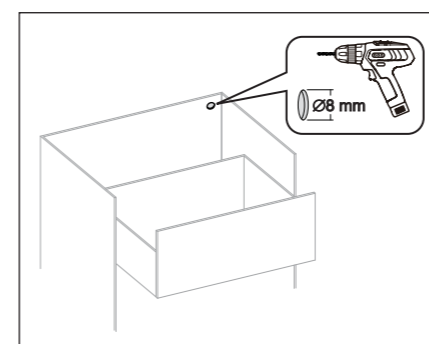
1. To keep the finishing of this product, wipe over with soft cloth periodically.
2. Do not use harsh chemical solvents, it may dis-colour or damage the finishing.

Before Installation

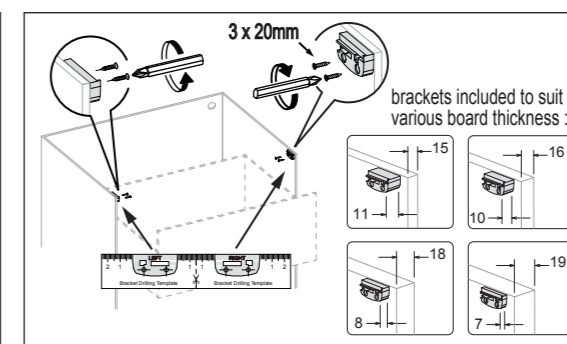
The cabinet side board thickness may vary. Four thicknesses (7, 8, 10 and 11 mm) of each of left and right mounting brackets are provided to achieve the best fit. Accurate measurement of the cabinet opening width is needed for selecting proper brackets. The 7mm thick brackets are attached on the light. If they do not fit, simply slide them off and replace with another set of brackets.

Note : The length of drawer light including left and right brackets is designed to be 1mm shorter than the cabinet opening width to avoid interference fit. Please refer to the Product Information in the front page.

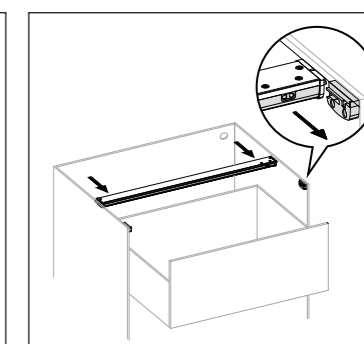
Installation and Operation



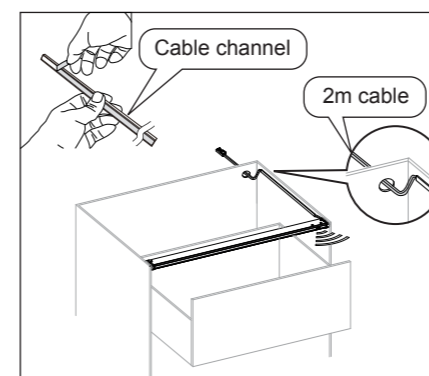
Drill an 8mm hole in the back of the cabinet carcass for feeding the cable through.



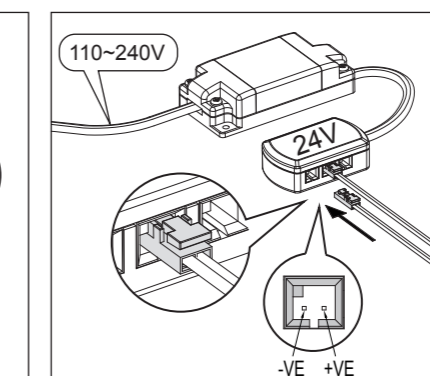
Fasten the left and right mounting brackets onto the two sides of the cabinet carcass (make sure they are aligned) using the 4 screws provided. Recommended to use the drilling templates to mark the locations for the brackets.



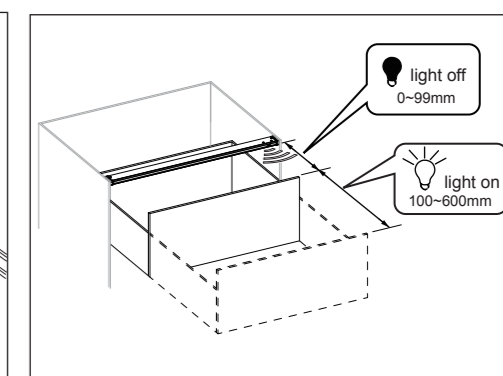
Insert the drawer light into the left and right mounting brackets simultaneously until it clicks into place.



Remove the cable channel cover. Peel off the release liner of adhesive tape from the base. Secure the channel base by applying pressure evenly on it over the carcass. Feed the 2m cable through the channel and the 8mm hole in the back of the carcass. Replace the cover.

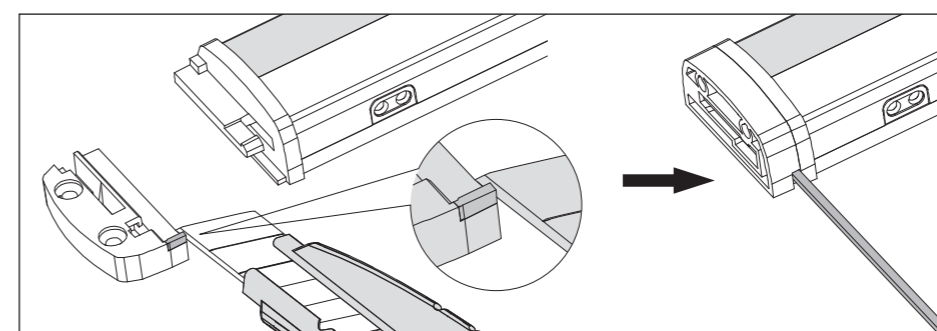


Plug the connector on the end of the cable into the 24V LED driver distributor block. Beware not to exceed the wattage of the driver, the max wattage will be displayed on the driver. Finally connect the LED driver to 110V~240V main supply.



The Drawer Light has a built-in IR sensor, which automatically turns on the light when the drawer is opened to the range of 100 to 600mm. The light is switched off when the drawer is closed, or the protective device of the light will automatically turns off the light after 10 hours.

Cable Outlet Option



In case the cable is needed to feed through the front of the bracket, the bracket is needed to cut a cable outlet as diagram shown.

Notes

1. The reflective surface inside the drawer cannot be black, transparent or translucent.
2. Fluorescent lamps with high frequency ballasts, direct sunlight and continuous signals at any frequency can interfere the functionality of the IR sensor.