



**CASA**<sup>®</sup>

**NICE & STYLISH**

**Modular Power Data OUTLETS**



Daisy Chain Power Connection

## EPL01 Nice & Versatile

Category: in desk, under desk  
 Easy to install with provided mounting brackets  
 3 mounting methods for easy installation  
 New mounting bracket for installation inside cable tray  
 Customized to any combination of power, data & custom modules  
 Capable of daisy chain power connection

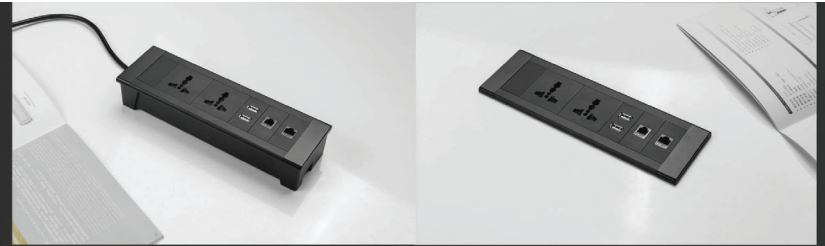
Patented product

UL cUL CCC CE RoHS



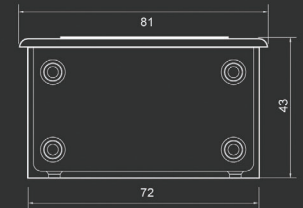
Ideal for: panel, training room, work station,  
 hotel room

Anodized aluminum body: Clear / Black ● ○  
 Modules: White / Black ● ○  
 End caps: Silver / Black ● ○



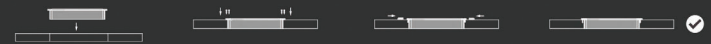
### Specification

Min size	1.5 modules
Max size	7 modules
Length (L)	No. of modules * 53 + 44 mm
Dimensions	L x 81d x 43h mm
Cut hole	(L -19.5) x 72d mm

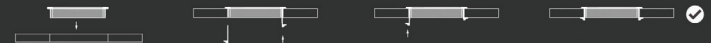


### Installation instruction

#### 1 Installation on panel



#### 2 Installation on desktop



#### 3 Installation inside cable tray





## EPL02H Ordinary & Practical

Category: on desk  
 Easy to install without tools required  
 2 mounting methods for fast & easy installation  
 Customized to any combination of power, data & custom modules  
 Capable of daisy chain power connection

Patented product



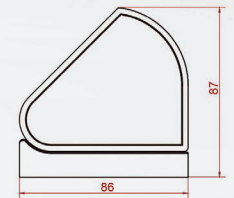
Ideal for: panel, training room, work station,  
 hotel room

Anodized aluminum body: Clear / Black ● ○  
 Modules: White / Black ● ○  
 End caps: Silver / Black ● ○



### Specification

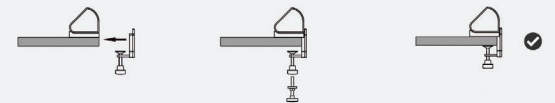
Min size	1.5 modules
Max size	7 modules
Length (L)	No. of modules)* 53 + 14 mm
Dimensions	L x 86d x 87h mm



### Installation instruction



#### 1 Clamp mount installation



#### 2 Grommet mount installation



## EPL02L Clean & Compact

Category: on desk  
 Easy to install without tools required  
 3 mounting methods for fast & easy installation  
 Customized to any combination of power, data & custom modules  
 Capable of daisy chain power connection

Patented product

CCC CE RoHS



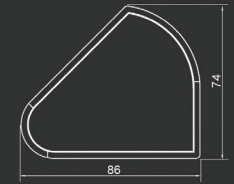
**i** Ideal for: height adjustable desk, training room, work station, hotel room

Anodized aluminum body: Clear / Black ●●  
 Modules: White / Black ○●  
 End caps: Silver / Black ●●

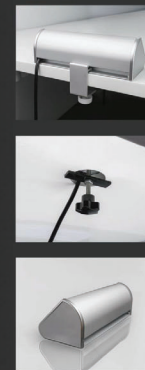


### Specification

Min size	1.5 modules
Max size	7 modules
Length (L)	No. of modules * 53 + 14mm
Dimensions	L x 86d x 74h mm



### Installation instruction



#### 1 Clamp mount installation



#### 2 Grommet mount installation



#### 3 Mounting tape installation





## EPL03 Classic & Elegant

### ELECTRICAL ROTARY POWER DATA BOX

Category: in desk

Easy to install with provided mounting screws

Customized to any combination of power, data & custom modules

\*Dual infrared protection sensors to avoid accidents from pinching wires or fingers due to pressing the switch accidentally.

Patented product

UL cUL CCC CE RoHS



Standard version

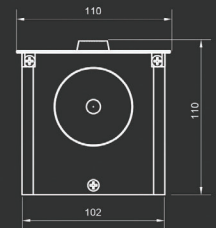


Black strip version



### Specification

Min size	3 modules
Max size	5.5 modules
Length (L)	No. of modules*53 + 138mm
Dimensions	L x 102d x 110h mm
Cut hole	(L-30) x 106d mm



### Installation instruction



**i** Ideal for: conference table, executive desk, training room

Anodized aluminum body: Clear / Black ● ○  
 Modules: White / Black ● ○  
 End caps: Silver / Black ● ○



## EPL03M Simple & Neat

MANUAL ROTARY POWER DATA BOX

Category: in desk

Easy to install with provided mounting screws  
Customized to any combination of power, data & custom modules

Patented product

UL cUL CCC CE RoHS



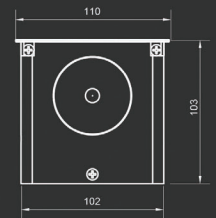
Standard version



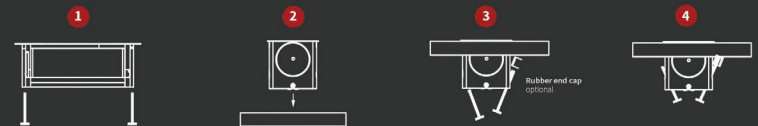
Black strip version

### Specification

Min size	2 modules
Max size	6.5 modules
Length (L)	No. of modules * 53 + 85mm
Dimensions	L x 102d x 103h mm
Cut hole	(L - 30) x 106d mm



### Installation instruction



**i** Ideal for: conference table, executive desk, training room

Anodized aluminum body: Clear / Black ● ○  
Modules: White / Black ● ○  
End caps: Silver / Black ● ○




## EPL06 Contemporary & Slim

Category: on desk, under desk  
Easy to install without cutout on work surface  
3 mounting methods and 2 of them without tools required  
Customized to any combination of power, data & custom modules  
Capable of daisy chain power connection

Patented product

UL cUL CCC CE RoHS

 Ideal for: panel, training room, work station,  
hotel room

Anodized aluminum body: Clear / Black ●●  
Modules: White / Black ○●  
End caps: Silver / Black ●●





## Installation instruction



- 1 Clamp mount to install on the edge of a work surface



- 2 Underneath mount to install underneath a work surface

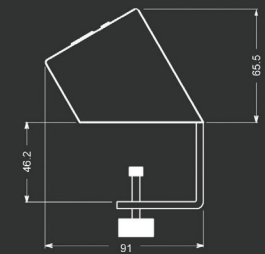


- 3 Grommet mount to install over a grommet hole of a work surface

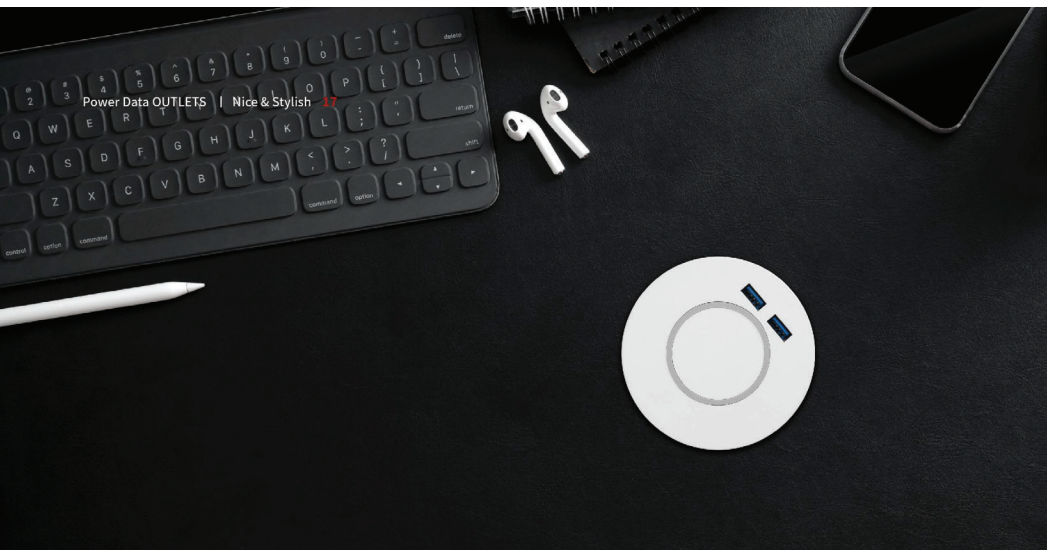


## Specification

Min size	1.5 modules
Max size	7 modules
Length (L)	No. of modules * 53 + 16 mm
Dimensions	L x 91d x 65.5h mm







## EPL10R Fresh & Simple

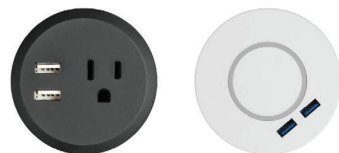
Power socket or Qi wireless charger  
 Category: in desk  
 Easy to install with provided barrel nut

Patented product

UL cUL CCC CE RoHS



Ideal for: height adjustable desk, training room, workstation, hotel room

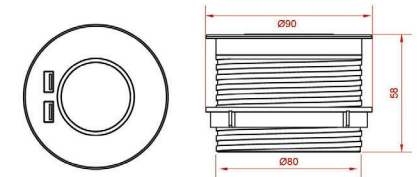


Finish: White / Black ○ ●

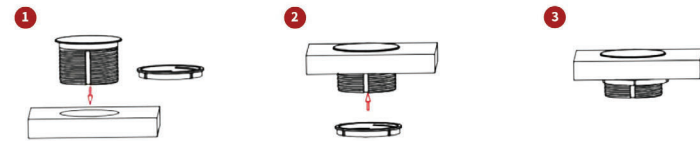
### Specification

Dimensions  $\phi$  90mm

Cut hole  $\phi$  80mm



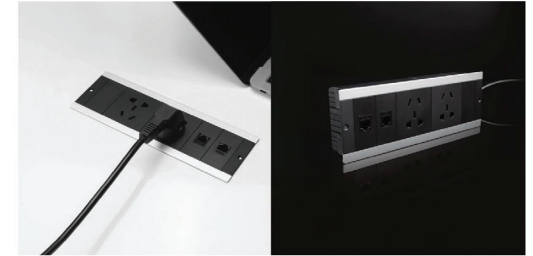
### Installation instruction





## EPL05 Affordable & Compact

Category: in desk  
Easy to install  
Customized to any combination of power, data & custom modules  
Ideal for: panel, work station  
**Patented product**



## EPL09 Graceful & slender

Category: in desk  
Easy to install with provided mounting brackets  
Customized to any combination of power, data & custom modules  
Ideal for: work station, hotel room  
**Patented product**

## EPL51 Basic & Practical

Category: in desk  
Easy to install  
Customized to any combination of power, data & custom modules  
Ideal for: work station, hotel room  
**Patented product**



## Modules for customized Power Data OUTLETS

### New Modules



#### Qi wireless, USB A + A quick charger

- Max. 18W output
- Qi certified 10W quick charging (supports iPhone)
- Support DCP, QC2.0, QC3.0, PE+1.1, PE2.0, FCP, AFC
- Short circuit, over voltage, over temperature & over current protection



#### Qi wireless, USB A + C quick charger

- Max. 18W output
- Qi certified 10W quick charging (supports iPhone)
- Support DCP, QC2.0, QC3.0, PE+1.1, PE2.0, FCP, SCP, AFC, USB PD 2.0, PD3.0 PPS
- Short circuit, over voltage, over temperature & over current protection



#### PD quick charger USB A + C

- Max. 35W output
- Auto adjusted output voltage & current based on fast charge requirement
- Support DCP, QC2.0, QC3.0, PE+1.1, PE2.0, FCP, SCP, AFC, SFCP, USB PD 2.0
- Short circuit, over voltage, over temperature & over current protection

### Power socket Modules



German



French



Universal



UL



UK



CCC



Australia

### Other modules



phone



Cat. 6 data



Cat. 5e data



dual data



data + phone



dual USB data



dual USB charger



VGA



RCA audio



3.5 audio x2



3.5 audio



3.5 audio +RCA video



RCA



HDMI+USB



USB +3.5 audio



HDMI +3.5 audio



USB 3.0



HDMI



over-current protection switch



blank



wiring pass-through

Photos shown are for reference ONLY, the actual product may vary a little bit because of the continuously product enhancement.

