

Silent Drawer System

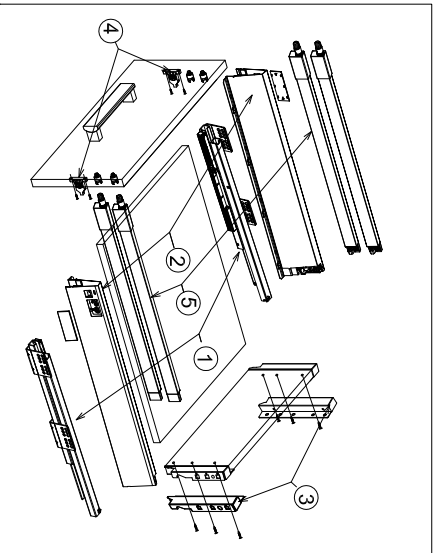
Modul Box Assembly Instruction



Special Features:

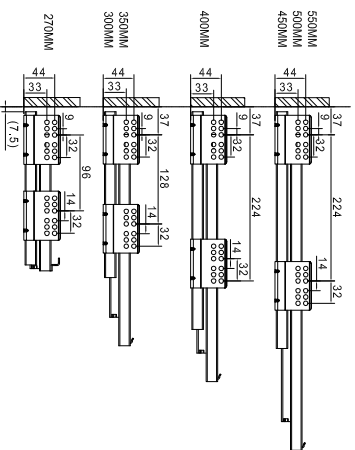
- Length: 270, 300, 350, 400, 450, 500, 550mm.
- The drawer side-board is 89mm high.
- Drawer width can be designed freely with automatic error adjustment.
- Hidden full pullout silencing sliding skid can bear 30kg and enjoys excellent stability and quiet and smooth sliding performance.
- Quick installation and dismantle.
- Newly-designed built-in damper is free from reinstallation and ensures soft and smooth drawer movements.

Basic length	Internally usable drawer depth	Minimum installation depth of drawer	Minimum installation height
270mm	244mm	270mm	222.4mm
300mm	274mm	300mm	224.4mm
350mm	324mm	350mm	224.4mm
400mm	374mm	400mm	222.4mm
450mm	424mm	450mm	222.4mm
500mm	474mm	500mm	222.4mm
550mm	524mm	550mm	222.4mm



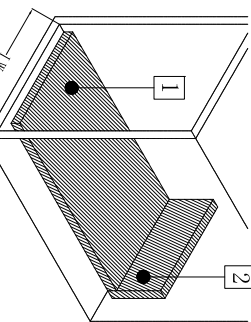
1. Guide	Length:
Left/Right	270mm 300mm 350mm 400mm 450mm 500mm 550mm
2. Drawer Side & Decorative Cap	Length:
Left/Right	270mm 300mm 350mm 400mm 450mm 500mm 550mm
3. Back connector	Left / Right
4. Front connector	Left / Right
5. Draw-rood	Left / Right

Runner Installation(mm)



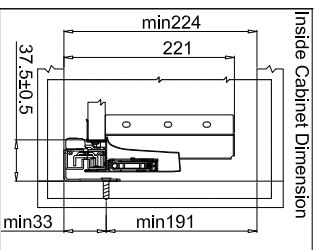
Basic length: 270/300/350/400/450/500/550

Technology pivot:
Bottom and Back Panel Measurement
16MM Density Panel

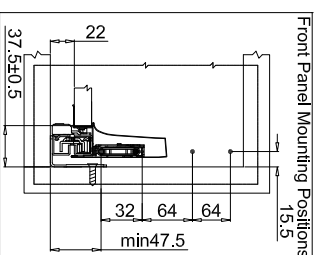


- 1 LW: Inside Cabinet Width
Bottom panel width=Inside Cabinet Width-75±0.5
Back panel length=Runner length-24MM
- 2 Back panel height=199MM
Back panel width=Inside Cabinet Width-87±0.5

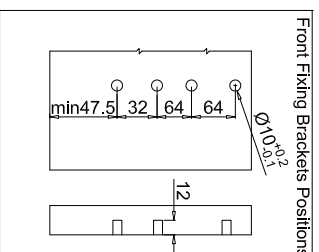
Inside Cabinet Dimension



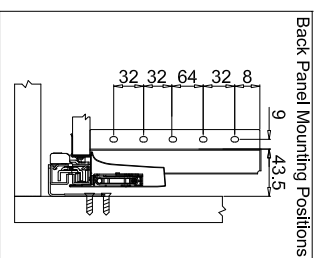
Front Panel Mounting Positions



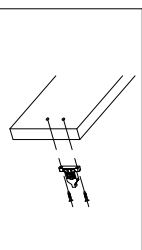
Front Fixing Brackets Positions



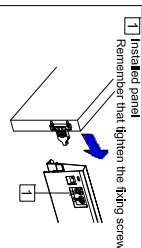
Back Panel Mounting Positions



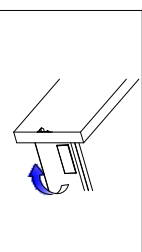
Front fixing brackets mounting



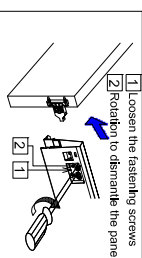
1 Installed panel



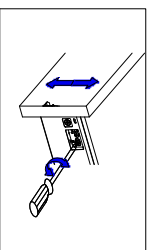
Front panel removing



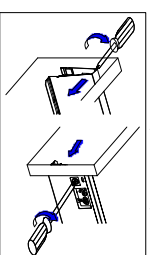
1 Loosen the fastening screws



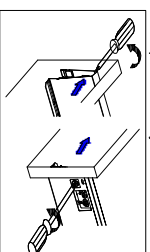
Front panel height adjustment: ±2mm



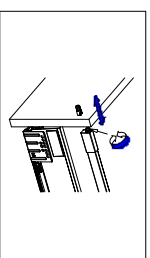
Front panel side adjustment: right mm



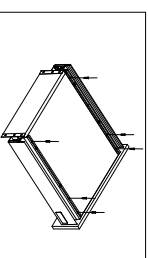
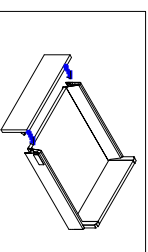
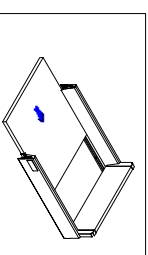
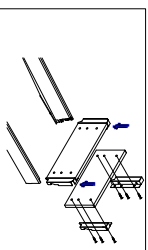
Front panel side adjustment:left mm



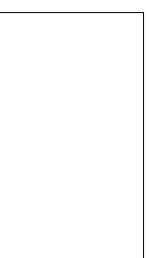
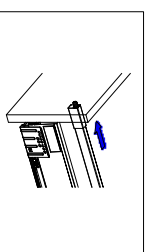
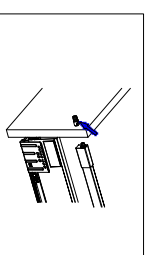
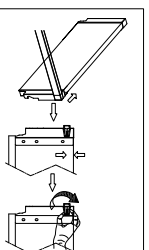
Adjustment the front panel



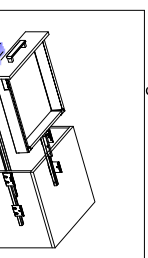
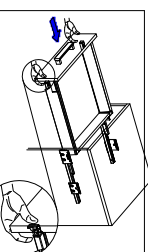
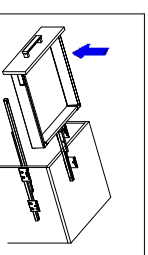
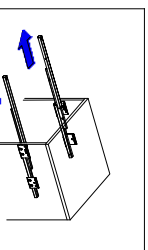
Installing the drawer



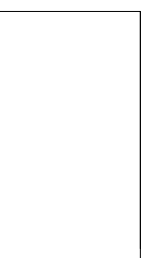
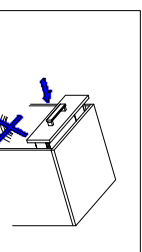
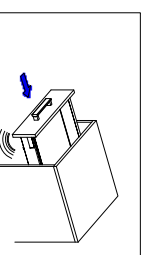
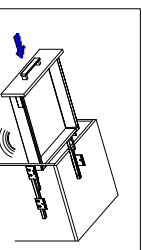
Mounting the drawer



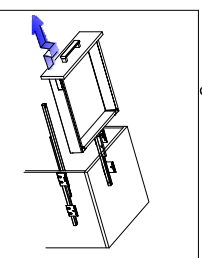
Installing the drawer



Function of the damper



Removing the drawer



Push drawer into cabinet, then pull out the drawer, pull the plastic buckle into the metal strapnet.